



**Manual**

# TABLE OF CONTENTS

<b>1. General</b>	<b>3</b>
<b>2. Specifications</b>	<b>3</b>
2.1 Overview	3
2.2 Mains Voltage and Protections	4
2.3 Safety Certifications	5
<b>3. Package Contents</b>	<b>5</b>
<b>4. Cable Configuration</b>	<b>5</b>
4.1 Connection Options	5
4.2 Cable Diagram WPC450/550	6
4.3 Cable Diagram WPC650/750	6
<b>5. Installation</b>	<b>6</b>
5.1 Installing the Power Supply into a PC Case	6
5.2 Connecting Mainboard and Graphics Card(s)	7
5.3 Connecting Optical Drives and Other Peripheral Devices	7
5.4 Checking All Connections	7
<b>6. Troubleshooting</b>	<b>8</b>

Dear Customer,

Thank you for your purchase of this high-quality SHARKOON product. To ensure a long service life, and full functionality of the product, we recommend that you read this manual thoroughly.

**SHARKOON Technologies**  
www.sharkoon.com

## 1. General

Power	450, 550, 650 or 750 Watt
CPU	Compatible with the latest Intel and AMD CPUs
Warranty	3 Years
PCIe Connectors	WPC450/550 Bronze: 2x 6+2-Pin PCIe Connectors WPC650/750 Bronze: 4x 6+2-Pin PCIe Connectors
80 PLUS Certification	Bronze
Fan	120 mm Fan
Efficiency	20% Load: Min. 82% 50% Load: Min. 85% 100% Load: Min. 82%

## 2. Specification

### 2.1 Overview

Model No.	WPC450 Bronze				
	Input Voltage		Current	Frequency	
Input (AC)	115 - 230 VAC		8 A	50 - 60 Hz	
Output (DC)	+3.3 V	+5 V	+12 V	-12 V	+5 Vsb
Max. Output Current	20 A	20 A	33.75 A	0.3 A	2.5 A
Max. Combined Power	103 W		405 W	3.6 W	12.5 W
Total Power	450 Watt				



Model No.	WPC550 Bronze				
Input (AC)	Input Voltage		Current	Frequency	
	115 - 230 VAC		8 A	50 - 60 Hz	
Output (DC)	+3.3 V	+5 V	+12 V	-12 V	+5 Vsb
Max. Output Current	22 A	22 A	41.25 A	0.3 A	2.5 A
Max. Combined Power	120 W		495 W	3.6 W	12.5 W
Total Power	550 Watt				

Model No.	WPC650 Bronze				
Input (AC)	Input Voltage		Current	Frequency	
	115 - 230 VAC		10 A	50 - 60 Hz	
Output (DC)	+3.3 V	+5 V	+12 V	-12 V	+5 Vsb
Max. Output Current	22 A	22 A	48.75 A	0.3 A	2.5 A
Max. Combined Power	120 W		585 W	3.6 W	12.5 W
Total Power	650 Watt				

Model No.	WPC750 Bronze				
Input (AC)	Input Voltage		Current	Frequency	
	115 - 230 VAC		10 A	50 - 60 Hz	
Output (DC)	+3.3 V	+5 V	+12 V	-12 V	+5 Vsb
Max. Output Current	22 A	22 A	56.25 A	0.3 A	2.5 A
Max. Combined Power	130 W		675 W	3.6 W	12.5 W
Total Power	750 Watt				

## 2.2 Mains Voltage and Protections

The WPC works with 115 - 230 Volts. It is available with the following protective measures:

### 1. Over Power Protection (OPP)

If a voltage rail draws in more electricity to the power supply than the specifications allow, the power supply will switch off.

### 2. Over Voltage Protection (OVP)

This function protects against excessive voltage, preventing damage to the PC by switching off the power supply during a surge.

### 3. Under Voltage Protection (UVP)

If the power supply falls below a fixed number of the minimum voltage, the power supply will switch off automatically.

### 4. Short Circuit Protection (SCP)

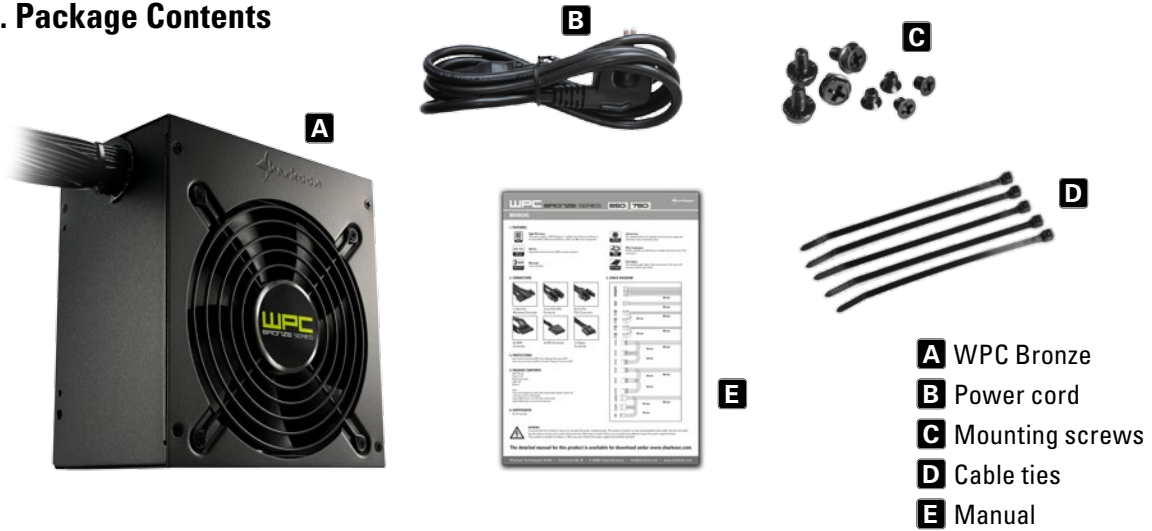
Should a short circuit occur with your PC, the SCP function switches off the power supply and protects the electronics from damage.



### 2.3 Safety Certifications

Our power supply is tested and complies with CE, FCC and CB safety certifications.

### 3. Package Contents



Note:

If you are missing any of the items listed above, please contact our customer service immediately:

support@sharkoon.com (Europe)

support@sharkoon.com.tw (International)

### 4. Cable Configurations

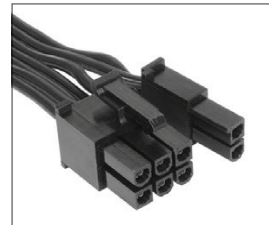
#### 4.1 Connection Options



1x 20+4-Pin Mainboard Connector



1x 4+4-Pin CPU Connector



WPC450/550 Bronze:  
2x 6+2-Pin PCIe Connector

WPC650/750 Bronze:  
4x 6+2-Pin PCIe Connector

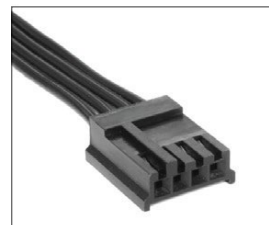


WPC450/550 Bronze:  
5x SATA Connector

WPC650/750 Bronze:  
6x SATA Connector



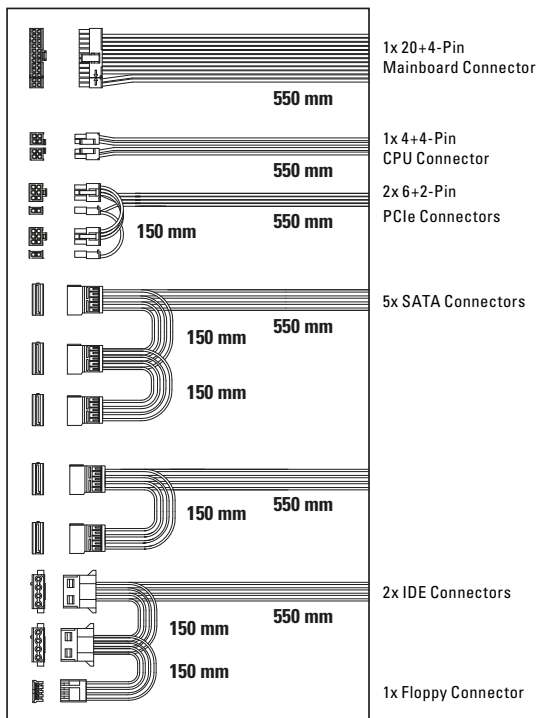
2x IDE Connector



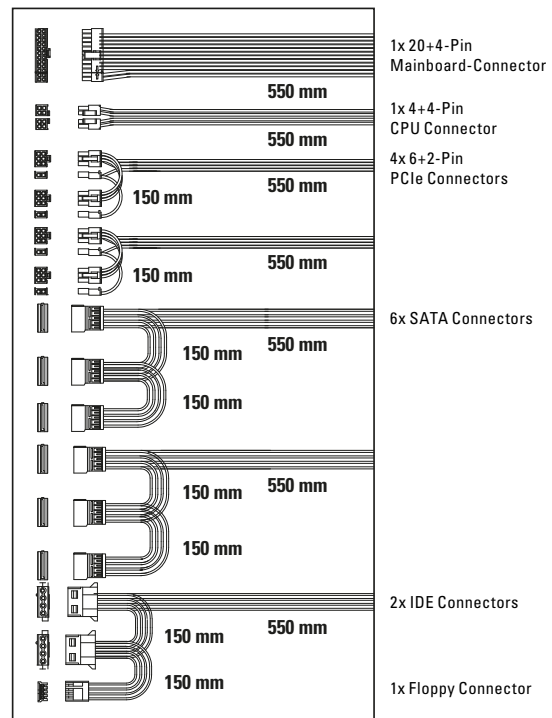
1x Floppy Connector



## 4.2 Cable Diagram WPC450/550



## 4.3 Cable Diagram WPC650/750



## 5. Installation

If installing into an empty PC case, please continue to section 5.1. If a power supply is already installed, remove it first from the case.

To do so, proceed as follows:

1. Turn off your PC. Disconnect the power cord from the wall outlet and your power supply.
2. Open the PC case. For additional information, refer to the manual of the PC case.
3. Disconnect all cables between the power supply and the other PC components (e.g. mainboard, HDDs, drives, fans, etc.).
4. Remove the mounting screws connecting the power supply to the PC case and then carefully remove the power supply from the case.

### 5.1 Installing a Power Supply into a PC Case

1. Insert the power supply into the PC case and place it against the power supply bracket on the rear panel. For additional information, refer to the manual of the PC case.
2. Attach the power supply from the outside of the case using the provided screws. Ensure that the fan and air vents of the built-in power supply are not covered.



## 5.2 Connecting Mainboard and Graphics Card(s)

1. Plug the 20+4-pin mainboard connector (Fig. 1) into the respective port of the mainboard.
2. If your mainboard also features either a 4-pin or 4+4-pin CPU connector, connect the plug with the mainboard port (Fig. 2).

### Note:

The power connection of the mainboard depends on the vendor and may vary. For detailed information on how to establish the power connector, please refer to your mainboard's manual.

3. If your PCIe graphics card requires an additional power supply, connected the 6-pin or 6+2-pin PCIe connector to ensure the graphics card receives a stable power supply (Fig. 3).

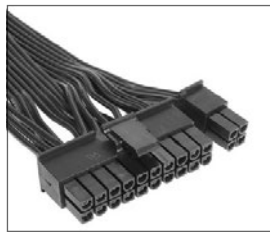


Fig. 1: 20+4-Pin Mainboard Connector

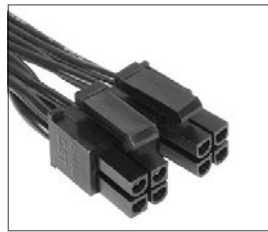


Fig. 2: 4+4-Pin CPU Connector

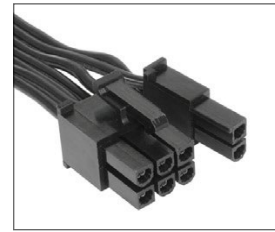


Fig. 3: 6+2-Pin PCIe Connector

## 5.3 Connecting Optical Drives and Other Peripheral Devices

Connect the IDE connector (Fig. 4), SATA connector (Fig. 5) and the Floppy connector (Fig. 6) with the appropriate peripherals.



Fig. 4: IDE Connector



Fig. 5: SATA Connector

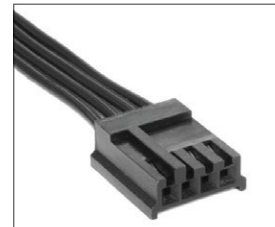


Fig. 6: Floppy Connector

### Note:

For additional information, refer to the respective manuals of your drives and peripheral devices.

## 5.4 Checking All Connections

Ensure that all devices are properly connected. Close the PC case. Connect the power cord with the power supply and wall outlet. Turn the power supply on. This completes the installation of the power supply.



On/Off Switch for the Power Supply

### Note:

All connectors are designed to avoid misconnection. If the connectors are unable to connect to the mainboard, drives or peripheral devices, please check if both connectors are attached in the correct orientation. Do not force to plug the connectors within the incorrect orientation, nor modify any of the components, as this will damage the power supply and other hardware. SHARKOON warranty does not cover damage cause by incorrect handling.





## 6. Troubleshooting

If the power supply does not work properly, please check the following:

1. Is the power cord correctly inserted into a wall outlet and the power inlet of the power supply?
2. Ensure that the on/off switch is in the "I" position.
3. Check if the 20+4-pin mainboard connector and the 4+4-pin CPU connector are correctly attached to the mainboard.
4. Check if the cable is securely connected to the port of the peripheral devices.
5. Unplug the power cord from the wall outlet and let the power supply rest for about 10 minutes. This will trigger a reset of the protection circuitry.

If the system still does not start, please contact [support@sharkoon.com](mailto:support@sharkoon.com).

## Legal Disclaimer:

For potential loss of data, especially due to inappropriate handling, SHARKOON assumes no liability. All named products and descriptions are trademarks and/or registered trademarks of the respective manufacturers and are accepted as protected. As a continuing policy of product improvement at SHARKOON, the design and specifications are subject to change without prior notice. National product specifications may vary. The legal rights of the enclosed software belong to the respective owner. Please observe the license terms of the manufacturer before using the software. All rights reserved especially (also in extracts) for translation, reprinting, reproduction by copying or other technical means. Infringements will lead to compensation. All rights reserved especially in case of assignment of patent or utility patent. Means of delivery and technical modifications reserved.

## Disposal of your old product:

Your product is designed and manufactured with high quality materials and components, which can be recycled and reused.



When this crossed-out wheeled bin symbol is attached to a product, it means the product is covered by the European Directive 2012/19/EU.

Please be informed about the local separate collection system for electrical and electronic products. Please act according to your local rules and do not dispose of your old products with your normal household waste. The correct disposal of your old product will help prevent potential negative consequences to the environment and human health.

## SHARKOON Technologies GmbH

Siemensstraße 38  
35440 Linden  
Germany

© SHARKOON Technologies 2017

[info@sharkoon.com](mailto:info@sharkoon.com)  
[www.sharkoon.com](http://www.sharkoon.com)

