

 **Sharkoon**



**Manual**

**SKILLER**  
**SGH30**  
USB GAMING HEADSET



1. Specifications . . . . .	.3
1.1 General . . . . .	.3
1.2 Headphone Specifications . . . . .	.3
1.3 Microphone Specifications . . . . .	.3
1.4 Cable and Connectors. . . . .	.4
1.5 Compatibility . . . . .	.4
1.6 Package Contents . . . . .	.4
2. USB Connector . . . . .	.5
3. Software Installation. . . . .	.6
4. Software Overview . . . . .	.7
5. Speakers . . . . .	.8
6. Microphone . . . . .	.9
7. Application Setting . . . . .	10
8. Profile Settings. . . . .	10



# 1. Specifications

## 1.1 General

Type	Stereo Headset
Design	Circumaural
Connector	USB
Chip	CM108B
Surround Mode	Virtual 7.1*
Illumination	RGB
Weight without Cable	300 g

## 1.2 Headphone Specifications

Speaker Diameter	40 mm
Impedance	32 $\Omega$
Frequency Response	20 Hz - 20,000 Hz
Sensitivity	92 dB $\pm$ 4 dB
Max. Power	100 mW
Volume Control	✓

## 1.3 Microphone Specifications

Direction	Omnidirectional
Impedance	2.2 k $\Omega$
Frequency Response	100 Hz - 10,000 Hz
Sensitivity	-56 dB $\pm$ 4 dB
Flexible Microphone	✓
Microphone Mute	✓

\*Only with installed software through Windows



# 1. Specifications

## 1.4 Cables and Connectors

Total Cable Length USB	240 cm
Gold-Plated Connectors	✓

## 1.5 Compatibility

PCs/Notebooks	✓
PlayStation 4	✓

## 1.6 Package Contents

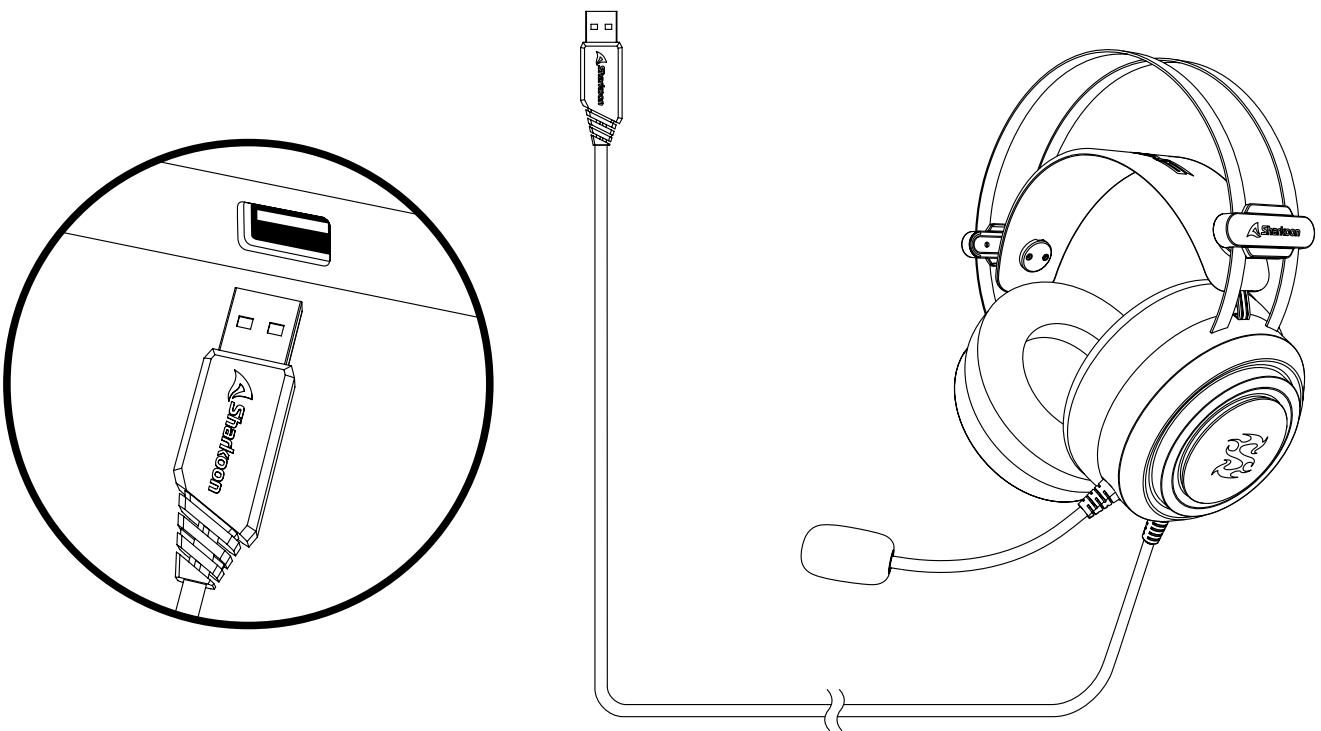
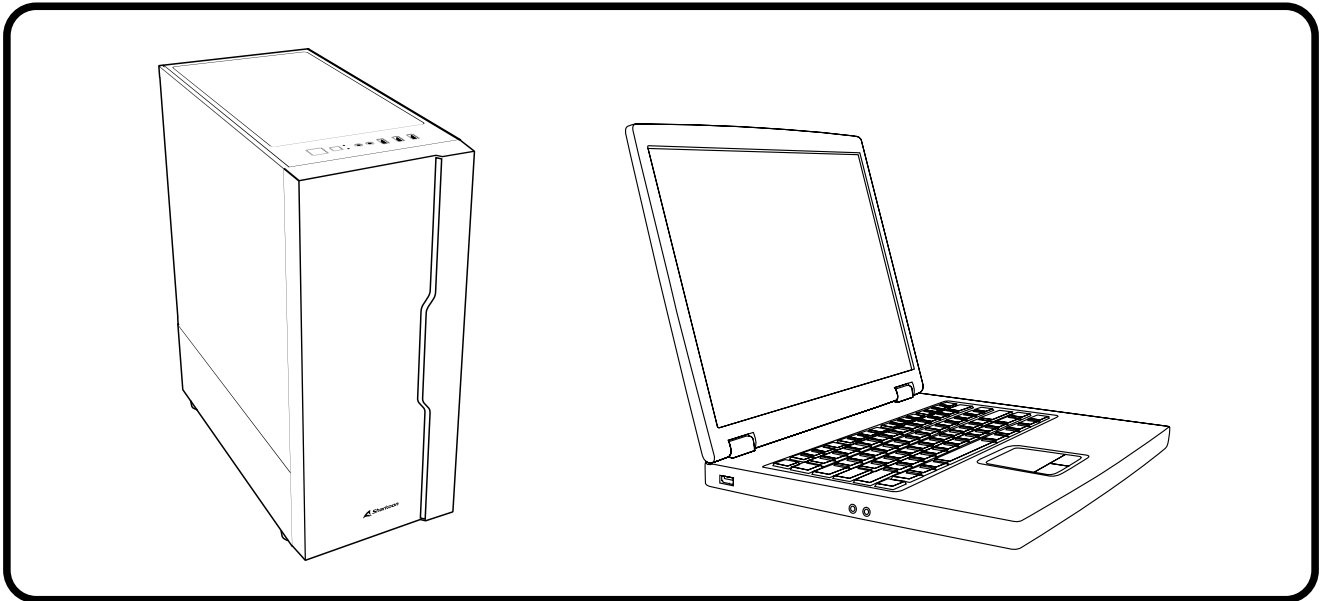
- SKILLER SGH30
- Manual



**Avoid listening at a high volume level for a longer period of time.  
Doing so may harm your hearing.**



## 2. USB Connector



### 3. Software Installation

First, download the Sharkoon Audio Center software from the Sharkoon website [www.sharkoon.com](http://www.sharkoon.com). Unzip the zip file into a location of your choice and then double-click the Setup file to start the installation.

Follow the instructions of the Installation Wizard and then click on "Finish". To complete the installation, please restart your computer. The Sharkoon Audio Center shortcut will then appear on the desktop as well as the Audio Center symbol on the task bar. The software has now been successfully installed.

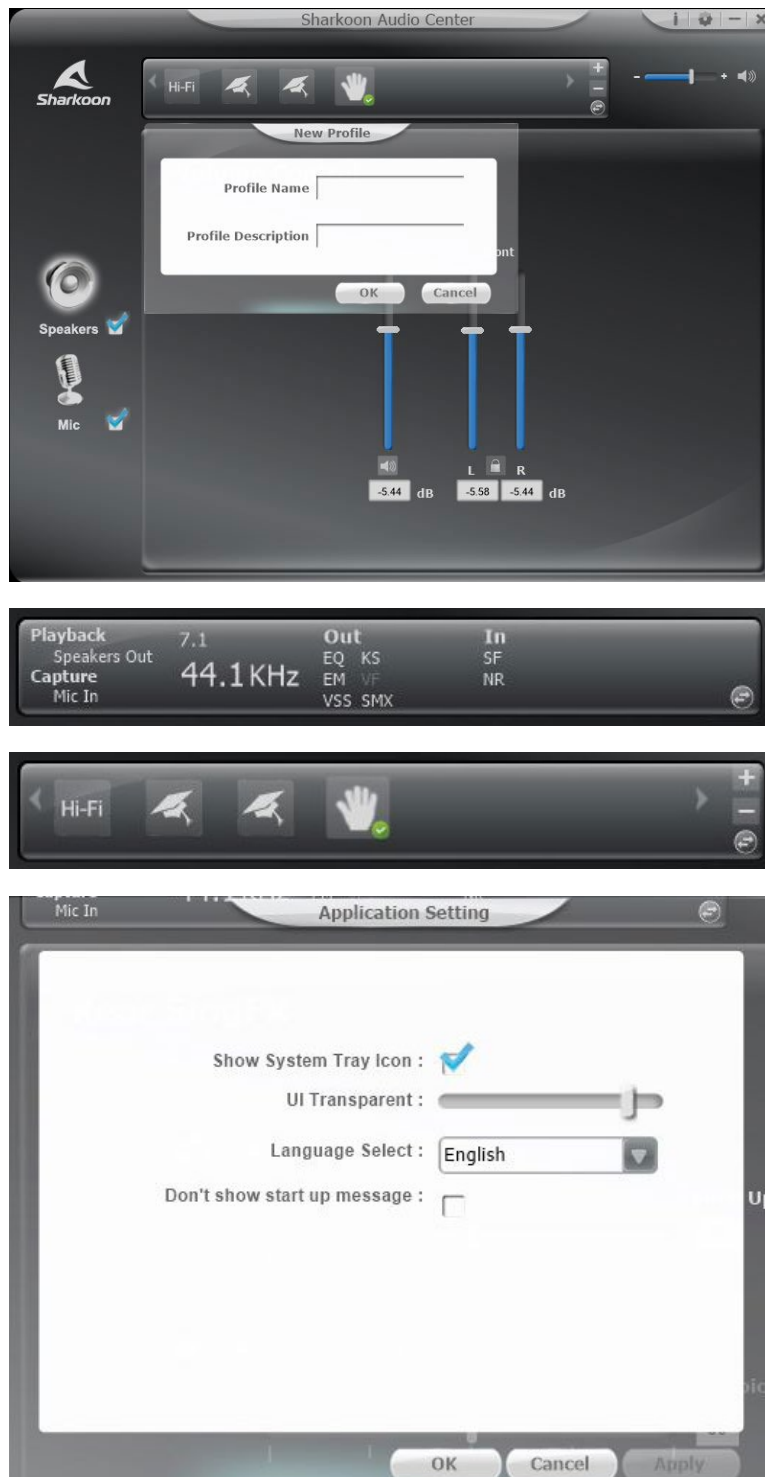
To launch the Audio Center software, click on the desktop shortcut or on the Audio Center icon on the taskbar.

*Note:* The software will continuously run in the background while the PC is turned on. This is the only way to use the SGH30 extended functions. The Audio Center icon is displayed in the taskbar only while the software is running.



## 4. Software Overview

Configure different settings and functions for the SKILLER SGH30 with the Sharkoon Audio Center. For example, volume settings, sound, or changes to the 7.1 surround sound. A series of pre-installed presets or effects for audio playback and audio recording can be accessed through the software.



**Status Panel:** In the upper area of the software you will find the Status Panel. This indicates which functions and settings for the speakers and microphone are currently activated or deactivated. Use the arrow button to switch to the Profile Panel.

**Profile Panel:** In the Profile Panel, audio profiles can be created, changed, edited or deleted. Click on the arrow button to switch back to the Status Panel.

**Application Setting/Information:** At the top-right of the software, the "i" button can be used to view information regarding the software drivers. The language and other settings are made using the gear button.

**Volume Control:** To the right of the Status/Profile Panel is the volume control of the SKILLER SGH30. The headset can be completely muted by clicking on the speaker symbol.

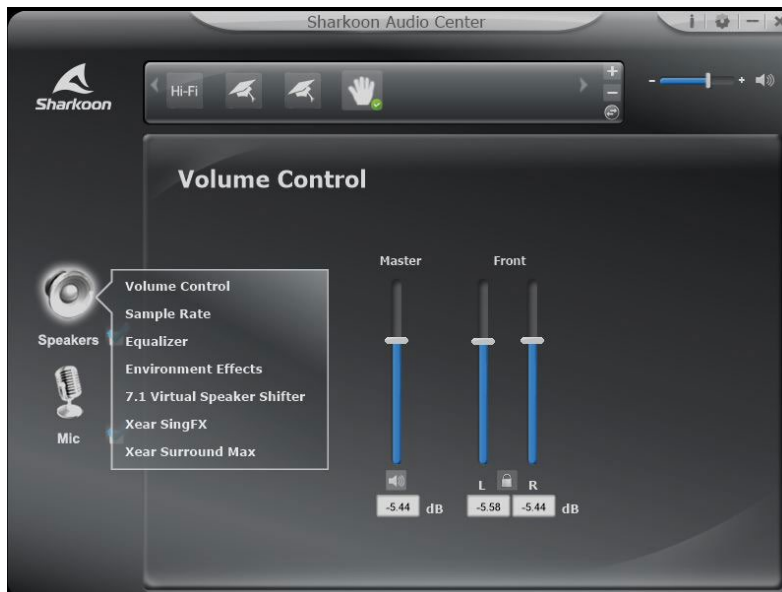
**Speakers:** The settings for the SKILLER SGH30 speakers are located on the left margin of the software. Left-click to open the volume control. Right-click to access the advanced speaker menu.

**Microphone:** The settings for the microphone of the SKILLER SGH30 are located on the left margin of the software. Left-click to open the volume control. Right-click to access the advanced menu for the microphone.





## 5. Speakers



Through the Sharkoon Audio Center, control the volume of the SKILLER SGH30 speakers, make changes to the sound via the equalizer, access a variety of pre-installed effects, and configure the simulated position of the 7.1 surround sound. To access the individual menu items, right-click on the speaker symbol on the left side of the software.

**Volume Control:** Adjust the volume by simply moving the slide control up to increase or down to decrease the total volume. The volume of either the left or right speaker can also be adjusted separately, using the slide controls on the right. To do this, simply click on the lock symbol to adjust the volumes.

**Sample Rate:** The sound chip of the SKILLER SGH30 offers two different sample rates. Choose between 44.1 kHz and 48 kHz.

**Equalizer:** Through the equalizer, bass, middle and treble can all be individually mixed for playback. There are also preset EQ profiles to choose from, which are all balanced for different musical styles. Equalizer settings can all be reset to their original values by clicking the default button. The option of creating and saving user-defined EQ profiles is also available.

**Environmental Effects:** The SKILLER SGH30 can use effects which simulate playback in different environments. Four effects can be selected directly, and by clicking on the arrow symbol, a drop-down list of the other effects appears.

**7.1 Virtual Speaker Shifter:** This function changes the simulated position of the virtual 7.1 surround sound playback. The speakers can rotate clockwise or counterclockwise using the buttons on the left. In addition, individual speakers can easily be moved using drag & drop. The volume of the individual speakers can be viewed on the right. To return the speakers to their original volume, press the reset button.

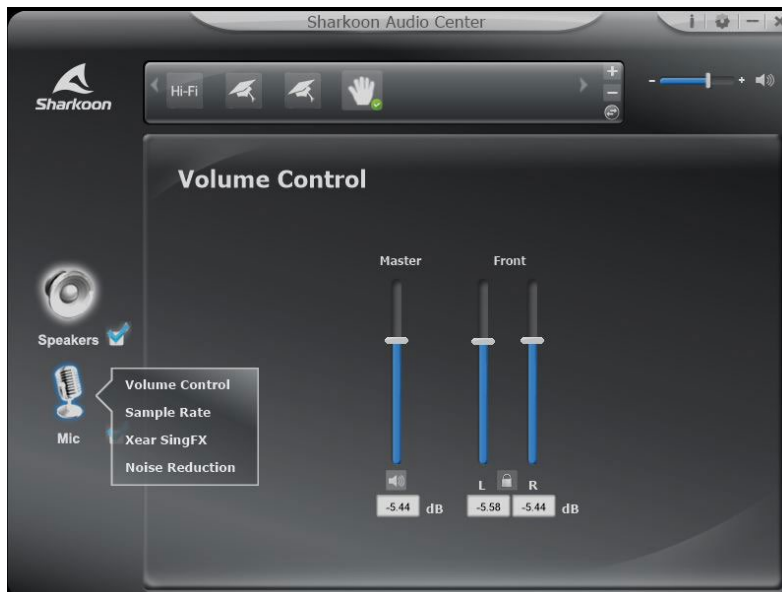
**Xear SingFX:** The Xear SingFX function allows adjustments to the pitch of the playback through the headset. If Key Shifting is activated, the tone pitch can be leveled up or down. The volume of the audible singing or dialog during playback can also be controlled via "Enable Vocal Fading".

**Xear Surround Max:** Xear Surround Max can be used for a better spatial sound by converting stereo signals from an audio source into a virtual 7.1 surround sound. To use this function, the 7.1 Virtual Speaker Shifter must be activated.





## 6. Microphone



The Sharkoon Audio Center enables setting customization for audio recording via the SKILLER SGH30 microphone. To access the individual menu items, right-click on the microphone symbol displayed on the left side of the software.

**Volume Control:** To adjust the microphone volume, simply move the slide control up to increase the volume or down to decrease the volume.

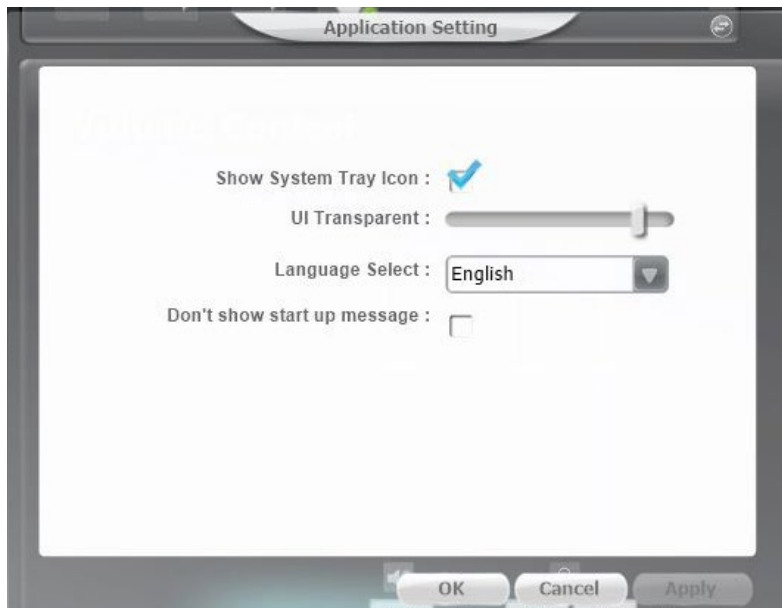
**Sample Rate:** The microphone of the SKILLER SGH30 offers two different sample rates. Choose between 44.1 kHz and 48 kHz.

**Xear SingFX:** With Xear SingFX, settings can be made for audio recording via the microphone. With Microphone Echo, recordings via the microphone can be given an echo effect. Magic Voice allows the user to distort or change their voice with a variety of effects.

**Noise Reduction:** For clear voice reproduction, Noise Reduction can be used to make corrections to recorded background noise through the microphone.



## 7. Application Setting



The gear symbol on the top right gives you access to the applications settings of the Audio Center software. Here, settings for the display and changes to the language of the software can be made

## 8. Profile Settings



Click the arrow button in the Status Panel to switch to the Profile Panel. Here, the settings can be saved in the Audio Center software in several profiles. To create a new profile, click on the plus symbol. Then, enter the chosen name and description of the profile. The created profiles are then displayed in the Profile Panel. To delete a profile, click on the minus symbol.



For potential loss of data, especially due to inappropriate handling, Sharkoon assumes no liability.

All named products and descriptions are trademarks and/or registered trademarks of the respective manufacturers and are accepted as protected. As a continuing policy of product improvement at Sharkoon, the design and specifications are subject to change without prior notice. National product specifications may vary.

The legal rights of the downloadable software belong to the respective owner. Please observe the license terms of the manufacturer before using the software.

All rights reserved especially (also in extracts) for translation, reprinting, reproduction by copying or other technical means. Infringements will lead to compensation.

All rights reserved especially in case of assignment of patent or utility patent. Means of delivery and technical modifications reserved.

## Disposal of your old products

Your product is designed and manufactured with high quality materials and components, which can be recycled and reused.



When this crossed-out wheeled bin symbol is attached to a product, it means the product is covered by the European Directive 2012/19/EU.

Please be informed about the local separate collection system for electrical and electronic products. Please act according to your local rules and do not dispose of your old products with your normal household waste.

The correct disposal of your old product will help prevent potential negative consequences to the environment and human health.

### **Sharkoon Technologies GmbH**

Grüninger Weg 48  
35415 Pohlheim  
Germany

© Sharkoon Technologies 2020

