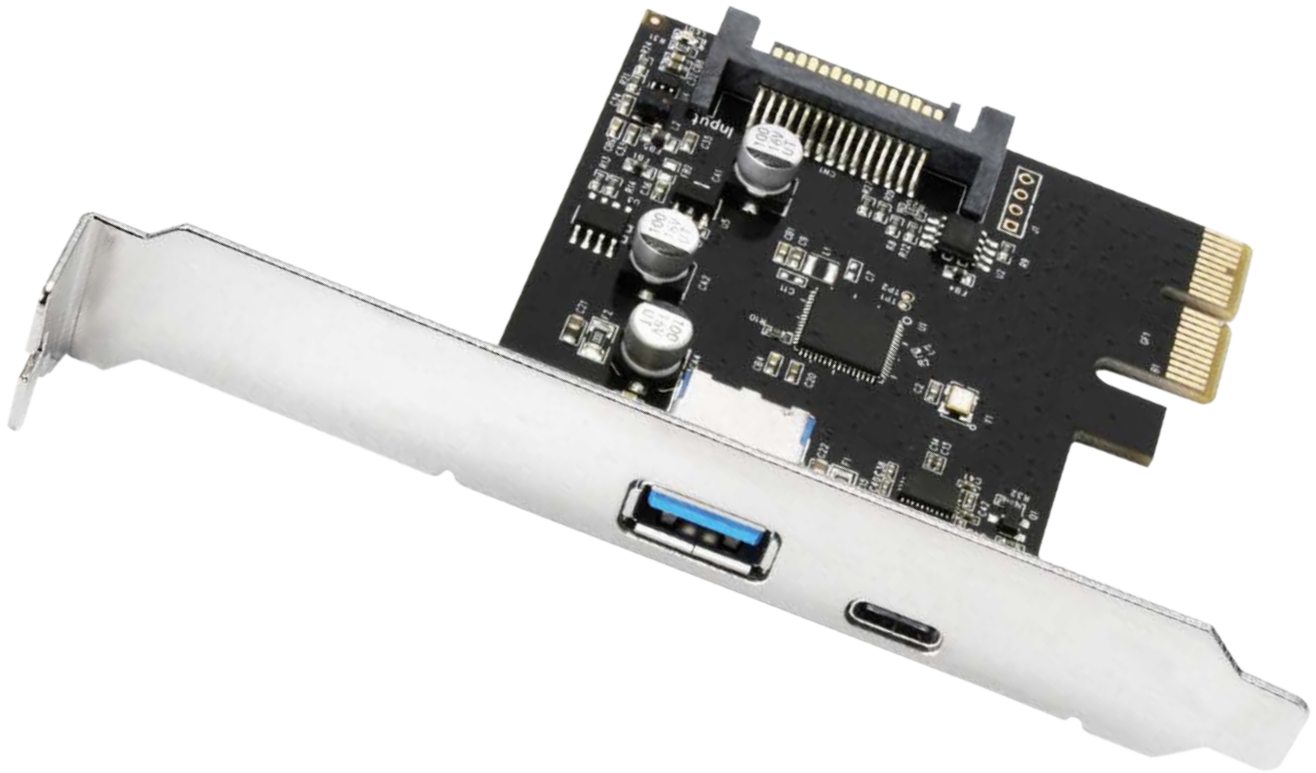


USB 3.1 Host Controller Card Type A+C

SuperSpeed USB 10 Gbit/s



Features

- Allows connection of USB 3.0 devices to a PC
- External interface: 1x USB 3.1 (type A port), 1x USB 3.1 (type C port)
- Max. data transfer rate USB: 10 Gbit/s
- PCIe support: PCIe 2.0 x2, PCIe 3.0 x1
- PCIe slot compatibility: x4, x8, x16
- Backwards compatible to USB 3.0 and USB 2.0
- Supported operating systems: Windows 7/8/10

Package Contents

- USB 3.1 Host Controller Card Type A+C
- CD with driver and manual

Retail Package

Dimensions: 110 x 130 x 25 mm
Weight: 80 g



EAN-Code



Shipment Box

PU: 30
Dimensions: 415 x 285 x 135 mm
Weight: 3 kg
Customs tariff no.: 85423190
Country of origin: China